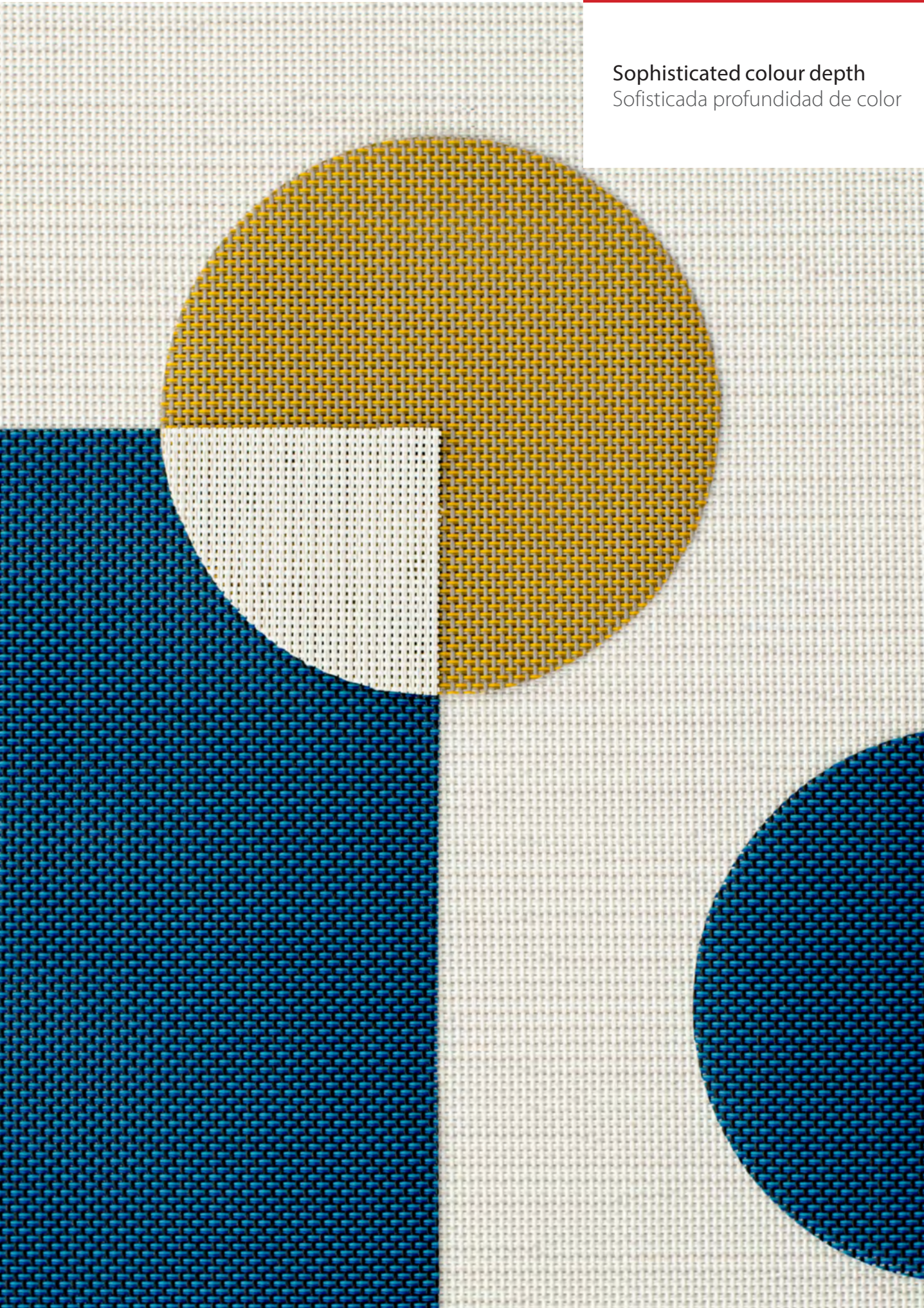


New colors 2020

Serge Ferrari

Batyline
Duo

Sophisticated colour depth
Sofisticada profundidad de color



Applications - Aplicaciones

Sunbeds, chairs and accessories - Tumbonas, sillas y accesorios

Office conference chairs - Sillas de conferencia de oficina



■ **Durable:** extreme outdoor resistance without sagging thanks to our SmartYarn Technology.

Duradero : resistencia extrema al exterior sin pandeo gracias a nuestra tecnología SmartYarn.

■ **Elegant:** sophisticated colour depth, a special twist effect.

Elegante: profundidad de color sofisticada, un efecto twist especial.

■ **Safe:** Batyline Duo is Phtalate Free.

Seguro: Batyline Duo no contiene ftalatos.

The Batyline durability with a vibrant color mix.

La durabilidad de Batyline con un aspecto vibrante.

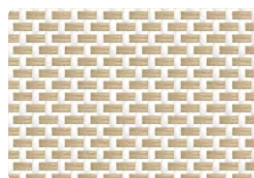




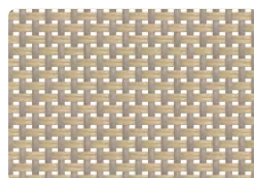
7300-50879



7300-5393



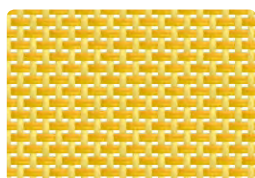
7300-5392



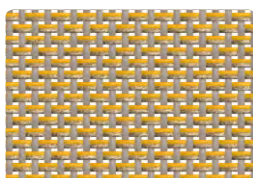
7300-5394



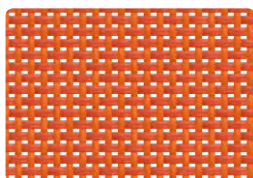
7300-50872



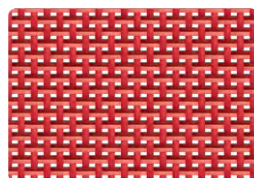
7300-51066



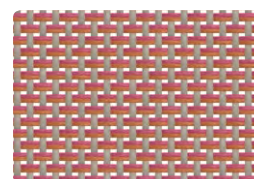
7300-50871



7300-51065



7300-51064

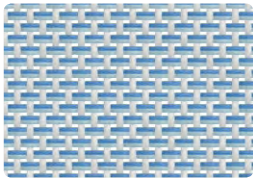


7300-50874

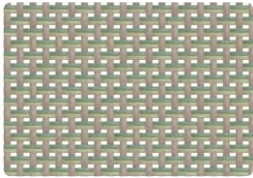
standard range
gama estándar

standard range

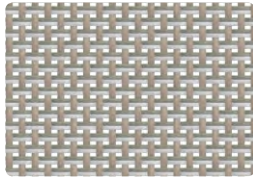
gama estándar



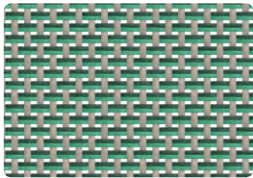
7300-51061



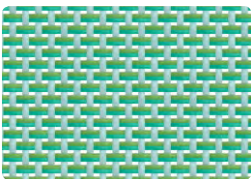
7300-50867



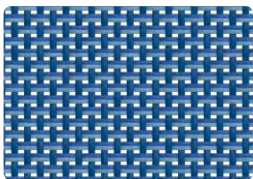
7300-50868



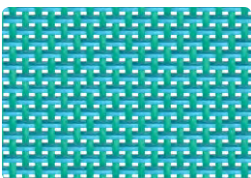
7300-51063



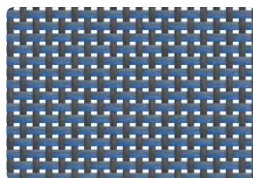
7300-51069



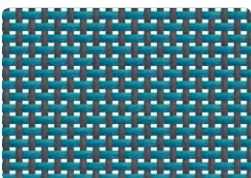
7300-51067



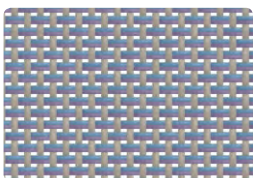
7300-51068



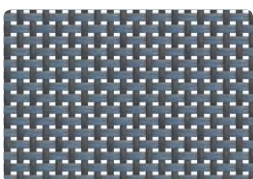
7300-50869



7300-50870



7300-51062



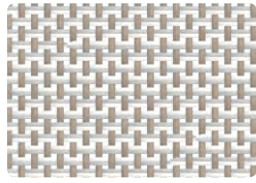
7300-50890



7300-5384

twist range

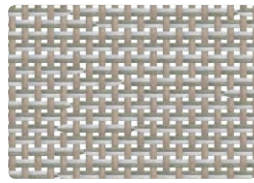
gama twist



7301-5397



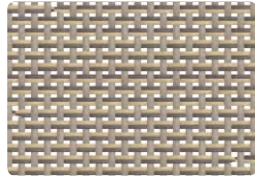
7301-50877



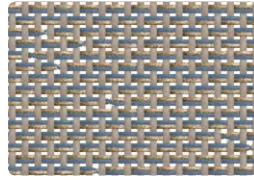
7301-50876



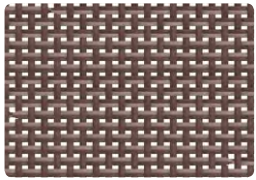
7301-5396



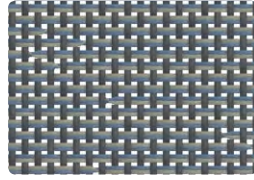
7301-5398



7301-50875



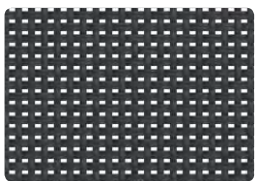
7301-5402



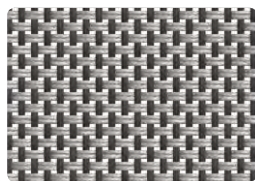
7301-50878

flame retardant

retardante de llama



7300FR-5005



7300FR-5562*
**on demand - Bajo pedido*

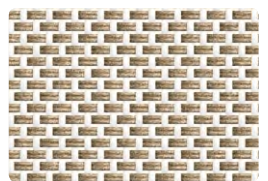
7300FR-5562*
**on demand - Bajo pedido*



7300FR-5557



7300FR-5001



7300FR-5562*
**on demand - Bajo pedido*

The colours and textures represented in this document are provided as reference only.
Los colores y texturas que se muestran en este documento lo son a título informativo.

Batyline

Duo

7300

7301

7300FR

■ Technical properties - Propiedades técnicas

Standards - Normas

Weight - Peso	560 g/m ² 16.5 oz/sqyd	EN ISO 2286-2
Width - Ancho	180 cm - 70.9 in	
Openess factor - Porosidad	8%	

■ Physical properties - Propiedades físicas

Tensile strength (warp/weft) Resistencia a la rotura (urdimbre/trama)	240/210 daN/5cm	EN ISO 1421
Elongation under load 20 daN (warp/weft) Alargamiento bajo carga 20 daN (urdimbre/trama)	≤ 2% / ≤ 3%	EN ISO 1421
Resistance to abrasion Reacción a la abrasión	>120 000 cycles	EN ISO 12947-2 Martindale
Weather resistance Resistencia al clima	GS=4 at 700h	ASTMG154: UVA340
Mould resistance - Resistencia al moho	Methods A, Excellent - Método A, Excelente	EN ISO 846-A
Extreme working temperatures Temperaturas extremas de utilización	-30°C / +70°C -22°F / +158°F	

■ Flame retardancy - Reacción al fuego

Rating - Clasificación		M2	NFP 92-507
		B1	DIN 4102-1
		pass - conforme	IMO MSC.307(88) (2010 FTP Code) Annex 1 Part 8
		pass - conforme	CAL TB 117
Euroclass		B-s2,d0	EN 13501-1

■ Management systems - Sistemas de gestión

quality - calidad	ISO 9001
environment - medioambiental	ISO 14001

■ Certifications, labels, garanties - Certificaciones, labels, garantías



**5 years
guarantee**

**Phthalate
free**

**Smart
Yarn**



With **S+** Serge Ferrari goes further than the Standards...
(consult us for further information)

■ Tools and services - Útiles y servicios

- Making-up guide & cleaning instructions available on demand
Manuales de instrucciones de fabricación y limpieza disponibles bajo demanda.
- Possibility to visualize & play with customized colours and weavings on our Penelope Software.
Posibilidad de visualizar y combinar colores y tejidos con nuestro software Penelope.

Quoted technical characteristics are average values with a +/- 5% tolerance. Our products are subject to improvements resulting from technical developments and we reserve the right to modify their characteristics at any time. The purchaser of our products is responsible for checking the above data.

Las características técnicas indicadas son valores medios con una tolerancia de +/- 5%. Nuestros productos están sujetos a evolución según los progresos técnicos, reservándonos el derecho de modificar las características en todo momento. Es responsabilidad del comprador de nuestros productos comprobar la validez de los datos anteriores.